

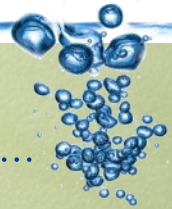


Kinetico®



The non-electric water softener

# Your soft water lifestyle starts here...



Imagine a life with cleaner skin and softer hair. A life with brighter clothing and bathroom fittings that shine. Imagine fewer water marks and less soap scum. Imagine saving lots of money on shampoos, detergents and soaps.

Welcome to the world of softened water and the many benefits you can enjoy with the KINETICO 2020c water softener.

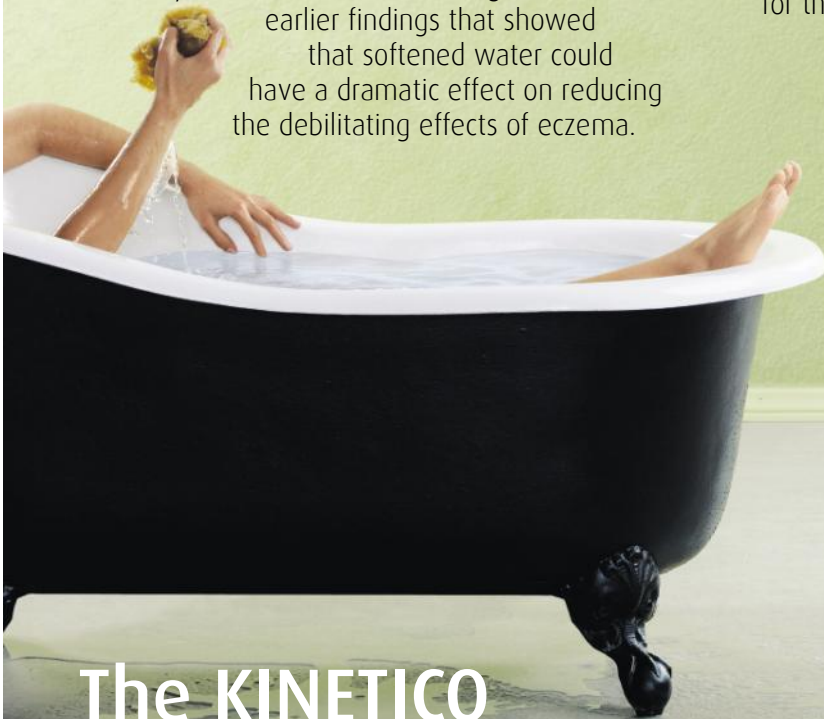
KINETICO water softeners remove all the chalk and lime in the water and replace it with a small amount of soft sodium. This makes your water softer than rain water. Bath time becomes a real pleasure. Children love the bubbles. Nothing can beat shaving in water that is silky smooth and so kind to skin - and there is so much more.

Currently the NHS has trials running to confirm earlier findings that showed that softened water could have a dramatic effect on reducing the debilitating effects of eczema.

Water softeners have also come to the Government's attention with the realisation that softened water can dissolve away scale deposits 100%. This has led to a Building Regulations compliance guide (2007) which makes water treatment mandatory with all new boilers fitted into homes.

Everyone is delighted that softened water has begun to be officially recognised for the many, many benefits that can be gained.

It's time to make softened water part of your lifestyle. We would like KINETICO to be your choice. Their reputation is unsurpassed. The 2020c is a compact, non electric, water powered softener requiring little maintenance. It can locate under a kitchen sink and provide an output for the largest of families.



## The KINETICO 2020c Home Water Softener



Certificate No: 0710082  
Third party accredited to BS14743

T: 01256 844044  
[www.aqua-nouveau.co.uk](http://www.aqua-nouveau.co.uk)



Aqua-Nouveau Limited  
Unit 20,  
Basingstoke Enterprise Centre,  
West Ham Lane, Basingstoke RG22 6NQ.





**There is nothing quite like the Kinetic 2020c**

**Moving water powers the 2020c rather than electricity** There is nothing to plug in, no buttons to push, timers to set or adjustments to make when the clocks change or the power is cut. Eliminating the problems associated with electric components makes this water softener incredibly easy to use.

**The 2020c regenerates only when necessary** It won't waste water or salt. Its twin cylinder configuration allows the resin to clean and charge itself (regeneration) through a turbine controlled metering system. Additional demands for softened water will always be compensated for automatically.

**The 2020c never compromises on capacity** Other twin cylinder systems operate with both cylinders on-line simultaneously and can leak hard water if they try to regenerate while water is being used. The high capacity resin operating with the high flow KINETICO valving maintains performance with just one cylinder on line. It is impossible to run out of water with the 2020c.



**24 hour, uninterrupted supply of softened water** Unlike some systems the KINETICO 2020c uses two resin filled cylinders to soften water. One cylinder is always available to provide water directly into the home. The second is either regenerating (in only 11 minutes) or waiting on stand-by to go into service. All the components of the valve operate in softened water avoiding scale build up and maintaining optimum efficiency.

**Installation**

All softeners require to be linked into the incoming water supply and therefore this will dictate, to a certain extent, where installation is possible. The 2020c is compact enough to locate under a kitchen sink, however, utility rooms and garages are also possible siting places. With the 2020c there are four connections – an inlet, an outlet, a drain and overflow. Installation is normally fairly straight forward and most components are available as DIY kits. We can provide an installation service and a site survey will outline the fitting implications and costs involved.

**Other considerations** It is important that all outside taps remain on the hard supply as it is wasteful to use softened water on the garden. Although softened water is potable it is usually possible to have fitted a separate cold water drinking tap if required. Alternatively the cold tap, at the kitchen sink, can be left on the hard supply. With a separate tap a filter or other drinking water system to be incorporated, to improve the taste and quality of water.

**Guarantee, service & salt**

The 2020c has an all inclusive guarantee which covers labour as well as parts (see price list for details). In the unlikely event of a malfunction, during this period, Aqua-Nouveau will come and resolve any problem that may arise **free** of charge. A local salt delivery service is available. The 2020c operates on block salt, although tablet salt can be used.

**Further information and assistance**

Over the years, Aqua-Nouveau Limited, have produced a series of fact sheets and other literature on water quality in the home. Available on request these can be used in conjunction with this leaflet to explain further the many benefits and savings which can be gained by purchasing a 2020c water softener. The only thing we cannot be sure about right now is how the softener can be installed into your home. As there are several factors to be considered, including flow rate and water pressure, a **free**, no obligation, site survey visit can be arranged. Whatever softener you eventually choose this information will be most valuable to you. Please contact us for further details.

**Specification**

The 2020c is available in two formats; an HE (high efficiency) version which is normally only used for indirect water systems and an HF (high flow) version for direct fed condensing and combination boiler systems. It is advisable to use high flow installation components when fitting into the latter category.

The data below complies with the industry's promotional guidelines and code of practice for ion exchange water softeners. The capacity is referred to in 'people days' at 300mg/l as CaCO<sub>3</sub> based on each person in a family using 160 litres of softened water every day.

**Dimensions -**

483mm (19") high x 210mm \*(8¼") wide x 455mm(17¾") deep.

\*Allow an extra 44mm (1¾") for connections for pipe work.

**Resin capacity -** 5.7 litres per resin cylinder.

**Salt efficiency -** HE 50% HF 40%

**Salt used per regeneration -**

0.22 kg (8oz) or 0.3kg (10.5oz) dependent on setting.

**Capacity -** 1 to10.

**Water used per regeneration -** 18.9 litres (4.2gallons).

**Max. daytime working pressure -** 8.3 bar (120psi).

A PLV should be fitted if pressure is above 5 bar (72psi).

**Min. daytime working pressure -** 0.83bar (12psi).

A pump should be fitted below this level.

**Maximum working temperature -** 50°C (122°F).

**Maximum flow rate -**

HE = 41 l/min (1.0 bar pressure drop approximately).

HF = 51 l/min (2.0 bar pressure drop approximately).

**Inlet/outlet connection -** ¾" BSP male.

**Overflow/drain connection -** ½" hose spigot.

**Salt storage -** 1 pack of 2 blocks of salt (8kg). Alternatively, 8kg of tablet salt (requires tablet salt container - see below).

**Cabinet colour -** Nickel silver with black decal.

**Shipping weight -** 18kg (39¾lb)

**Accessories -** Tablet salt container.

